

A low-angle photograph of several tall, white industrial silos or storage tanks. The silos are cylindrical with horizontal bands and are supported by a metal framework. They are set against a clear blue sky. A yellow curved banner is overlaid on the right side of the image.

**Building the Future
with you**

 **Solutions & Services for Industry**

... from design to commissioning of your installations



DESIGN STUDIES

- Audit and industrial evaluation (functional analysis)
- Characterization of raw materials (mixing, dosing, product flow tests)
- Feasibility and capacity studies (Basic Engineering Design, Front End Engineering Design)
- Design and dimensioning of installations (mechanical, electrical, automation)
- Flow simulation using ExtendSim
- Compliance with regulations (ATEX, CMR, FDA...)



CONSTRUCTION ENGINEERING

- Project management
- Manufacturing of equipment
- Local sourcing of certain equipment (storage, metal framework) and assembly / wiring teams
- Planning of operations (health and safety - MASE certification)



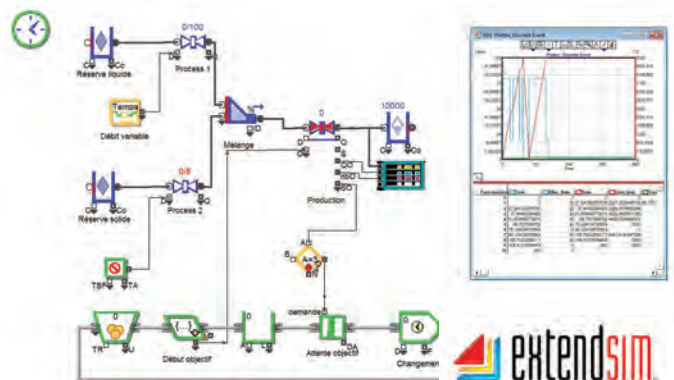
ASSEMBLY AND COMMISSIONING

- Mechanical and electrical work undertaken under the supervision of our highly qualified site managers (management of co-activity)
- Commissioning of the installation
- Performance tests
- Training of operators



POST-COMMISSIONING ASSISTANCE

- After sales service
- Remote maintenance



Our Assets

- ✦ **Multidisciplinary competencies**
- ✦ **Innovative solutions** reflecting the evolution of industrial processes
- ✦ **Flexible, scalable, reliable and robust** installations
- ✦ **Optimized performance** and production costs
- ✦ **Installations located worldwide**
- ✦ **Creation of partnerships** with local suppliers
- ✦ **Installations complying** with local laws and regulations



**Certification Sécurité
Santé Environnement**
(equivalent to VCA / SCC or OHSAS 18001)

Innovative solutions for the industrialization of production processes...

Study of your specific requirements

Integration of your markets' developments and challenges

Suggestion of solutions to bolster productivity

Dosing Transfer
Storage Handling Mixing
Instrumentation
Automation Packaging

of **powdery** and **wet formulated products**

Wide range of industries

Specialty chemicals
Building materials
Cosmetics
Pharmaceuticals
Animal feed
Environment

Variety of raw materials

Powdery
Wet
Pasty

Demanding environments

ATEX, CMR, FDA
and client procedures

Local regulations

ASME, CODAP, TR CU, UL...

Industrialization of
production processes -
either complete or partial:

Dosing
Handling
Transfer
Mixing


Tailor-made or
standard solutions

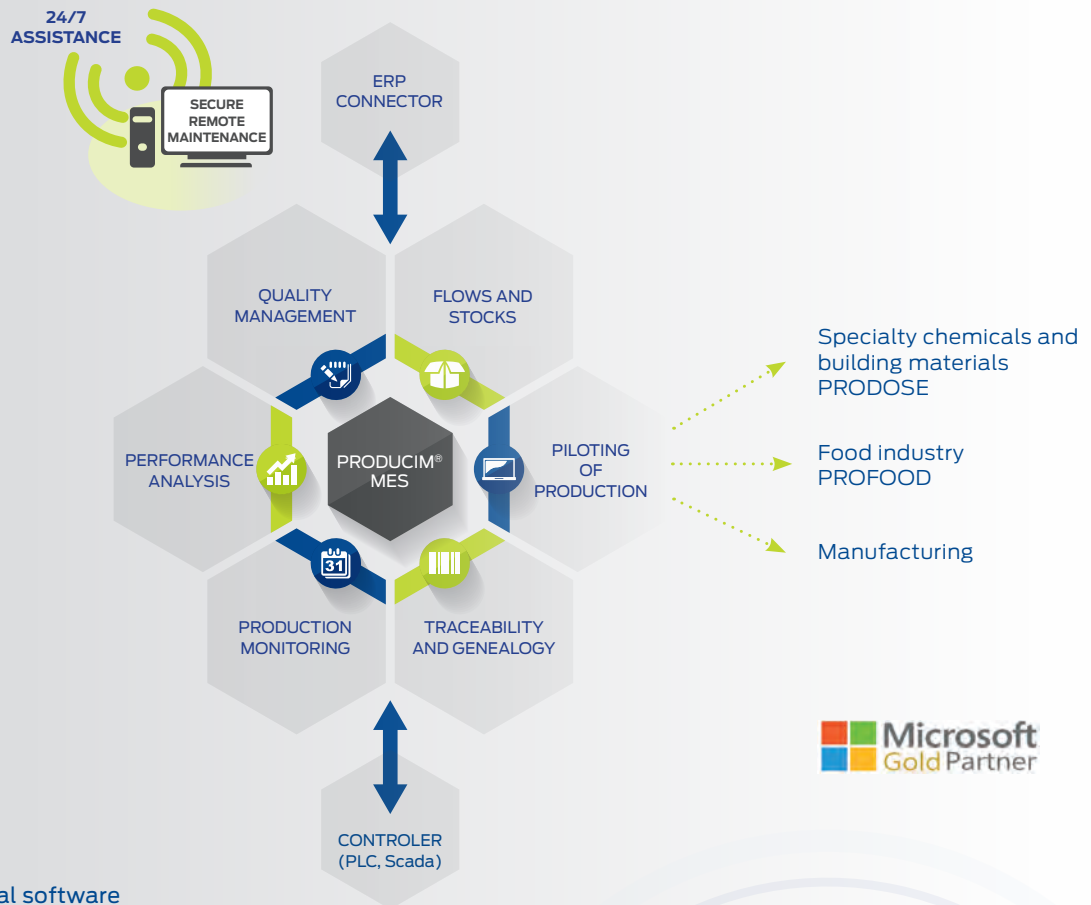
Turnkey solutions

New installations or
revamping of existing
installations



Piloting and traceability of industrial processes

Integration of the MES solution edited by  COURBON Software:
Producim®, a software suite dedicated to piloting and optimization of industrial performance



 **Microsoft**
Gold Partner

- ✦ Multilingual software
- ✦ Vertical market software
- ✦ Industrial automation and IT solutions which fully meet your needs: planning, piloting, monitoring and traceability of the process
- ✦ Revamping of obsolete equipment and software to ensure production tools are secure and have a long service-life
- ✦ Adaptation of architecture to your new needs and requirements
- ✦ Modular software suite
- ✦ Modules which integrate the specific requirements of your specialty and markets

Our Assets

- ✦ **Methodology** adapted to "Core Model" projects
- ✦ **Support** with multi-site deployments
- ✦ **Historic integrator** of PRODOSE



Wet and pasty processes

Our solutions are designed to receive and handle wet products as well as solid materials, to fully meet the needs and requirements of your production lines, from the modification of existing installations to complete turnkey plants.



Design and manufacturing of key process equipment and cleaning solutions:

- ✦ Preparation of formulations
- ✦ Dispersion systems
- ✦ Heat regulation
- ✦ Transfer (pigging systems)
- ✦ Cleaning In Place (CIP)
- ✦ Recycling system
- ✦ Treatment of waste water

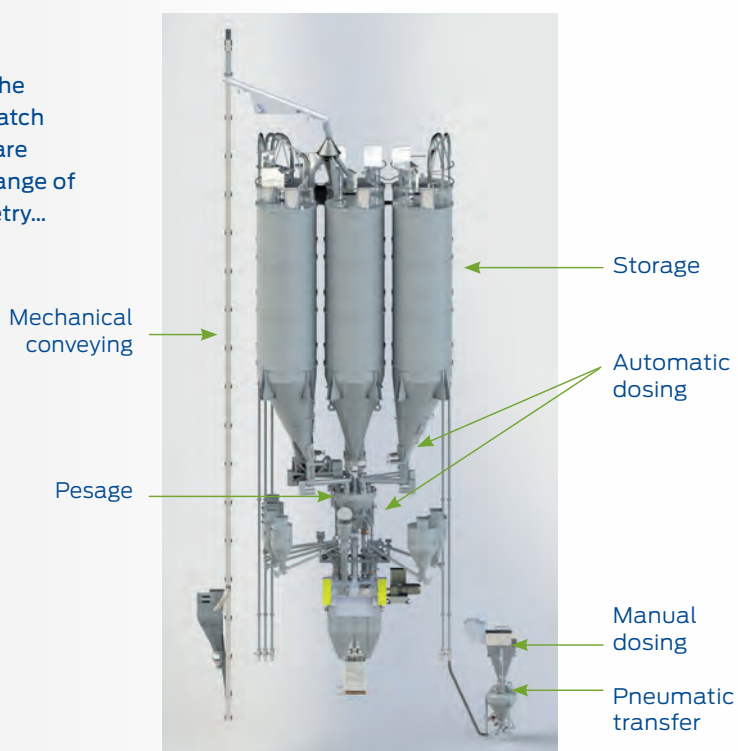
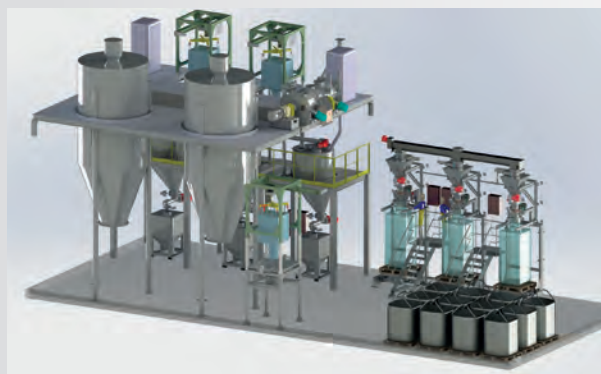
Our Assets

- ✦ **Process expertise:** solutions which meet the requirements of ready mixed pastes production
- ✦ **Comprehensive solutions:** control and supervision of the entire manufacturing process
- ✦ **Support:** from preliminary design to assistance with production and training
- ✦ **Flexibility:** numerous industrial applications (tile adhesive, coatings)
- ✦ **Reliability:** robust solutions, remote maintenance



Powders and powdery product processes

We provide complete turnkey production lines or parts of the production process which can function discontinuously (batch processes) or continuously (continuous processes). They are thus suited to all types of powdery products with a wide range of characteristics: density, volatility, abrasiveness, granulometry...

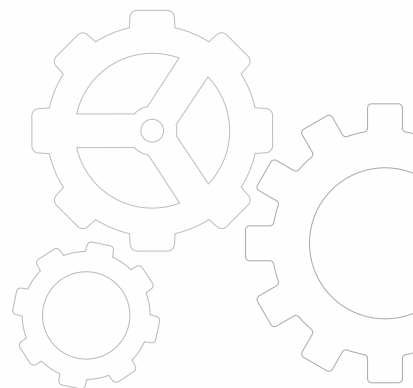


Design and manufacturing of turnkey installations :

- ✚ **Storage:** (silos, hoppers)
- ✚ **Dosing:** dosing and micro-dosing stations
- ✚ **Mixing:** wide range of intensive and rotating drum mixers
- ✚ **Transfer:** pneumatic or mechanical conveying (endless screw, bucket elevators...), high containment big-bag unloading stations
- ✚ **Sanitization:** completely dust-free environment, recycling of particles (zero waste)

Our Assets

- ✚ **Quality and Performance:** high dispersion performance, very short mixing time
- ✚ **Flexibility:** from the simplest to the most complex applications, batch or continuous processes
- ✚ **Scalability:** from the simple dosing & mixing station up to the integration of a variety of processes, and a wide range of options for tailor-made and scalable solutions
- ✚ **Adaptability:** your specific technical requirements linked to the production site and performance are taken into account





Services

Advice

- ✦ Master plan
- ✦ Evaluation / audit
- ✦ Preliminary studies, opportunity and feasibility studies (preliminary and detailed design)
- ✦ Specifications
- ✦ Evaluation of conformity
- ✦ Technical and functional analysis
- ✦ Assistance with optimization and use of the system

After-sales service

- ✦ **Regular preventative maintenance visits** of your formulation and mixing installations
- ✦ **Objective:** prolong the service life and productivity of your installations
- ✦ **Proactive approach:** we suggest the most recent technical innovations for your powdery, granulated or pasty processes

Spare parts

- ✦ Studies and diagnostics
- ✦ Delivery
- ✦ Stock

24/7 maintenance contracts

- ✦ Hotline
- ✦ TPAM (Third Party Application Maintenance)

Sustainable development

Our development policy complies with two complementary principles:

- Solutions with minimal impact on the environment (reduction of raw materials, decreased energy consumption),
- Development of high-efficiency public utility solutions to preserve resources.

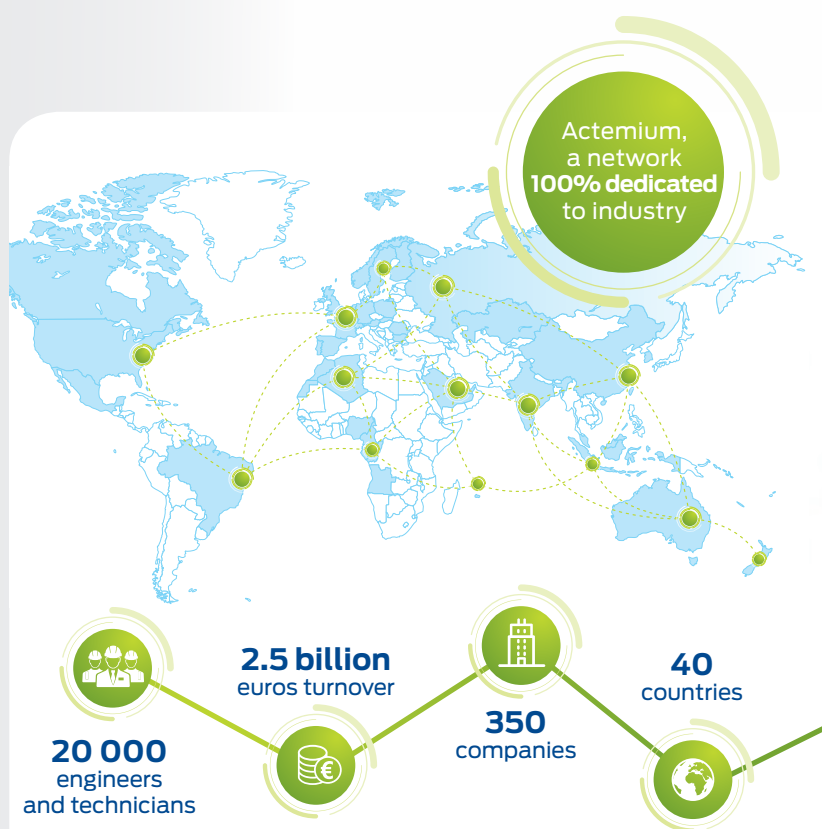
ASSISTANCE TECHNIQUE

- ✦ Assistance with design
- ✦ Assistance with commissioning
- ✦ Maintenance contracts
- ✦ I.T. support



Actemium Saint-Étienne Process Solutions develops **specific approaches** for each market:

- + Building materials
- + Speciality chemicals
- + Automotive
- + Life sciences
- + Food industry
- + Animal feed
- + Environment



ACTEMIUM

Process Solutions
Saint-Étienne

Firm name: SOFRADEN Industrie S.A.S.
70 rue de la Montat
42000 Saint-Étienne - France
T +33 (0)4 77 41 07 29 - F +33 (0)4 77 41 00 20
contact.aseps@actemium.com

www.mixing-process.actemium.com