



**Building the Future
with you**

... from design to commissioning of your installations



DESIGN STUDIES

- Audit and industrial evaluation (functional analysis)
- Characterization of raw materials (mixing, dosing, product flow tests)
- Feasibility and capacity studies (Basic Engineering Design, Front End Engineering Design)
- Design and dimensioning of installations (mechanical, electrical, automation)
- Flow simulation using ExtendSim
- Compliance with regulations (ATEX, CMR, FDA...)



CONSTRUCTION ENGINEERING

- Project management
- Manufacturing of equipment
- Local sourcing of certain equipment (storage, metal framework) and assembly / wiring teams
- Planning of operations (health and safety - MASE certification)



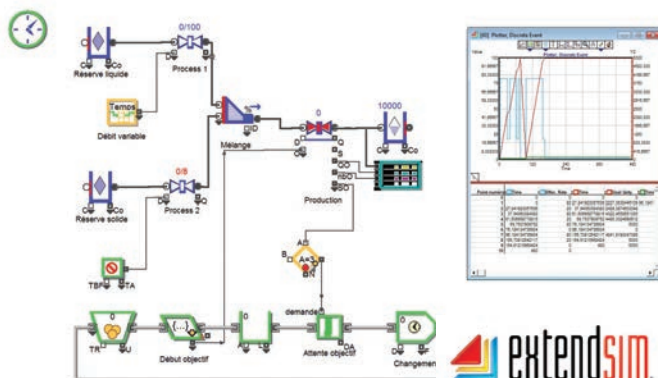
ASSEMBLY AND COMMISSIONING

- Mechanical and electrical work undertaken under the supervision of our highly qualified site managers (management of co-activity)
- Commissioning of the installation
- Performance tests
- Training of operators



POST-COMMISSIONING ASSISTANCE

- After sales service
- Remote maintenance



Our Assets

- ✦ **Multidisciplinary competencies**
- ✦ **Innovative solutions** reflecting the evolution of industrial processes
- ✦ **Flexible, scalable, reliable and robust** installations
- ✦ **Optimized performance** and production costs
- ✦ **Installations located worldwide**
- ✦ **Creation of partnerships** with local suppliers
- ✦ **Installations complying** with local laws and regulations



**Certification Sécurité
Santé Environnement**
(équivalent à VCA / SCC or OHSAS 18001)

Innovative solutions for the industrialization of production processes...

Study of your specific requirements

Integration of your markets' developments and challenges

Suggestion of solutions to bolster productivity

Dosing Transfer
Storage Handling Mixing
Instrumentation
Automation Packaging

of **powdery** and **wet formulated products**

Wide range of industries

Specialty chemicals
Building materials
Cosmetics
Pharmaceuticals
Animal feed
Environment

Variety of raw materials

Powdery
Wet
Pasty

Demanding environments

ATEX, CMR, FDA
and client procedures

Local regulations

ASME, CODAP, TR CU, UL...



Industrialization of
production processes -
either complete or partial:


Dosing
Handling
Transfer
Mixing

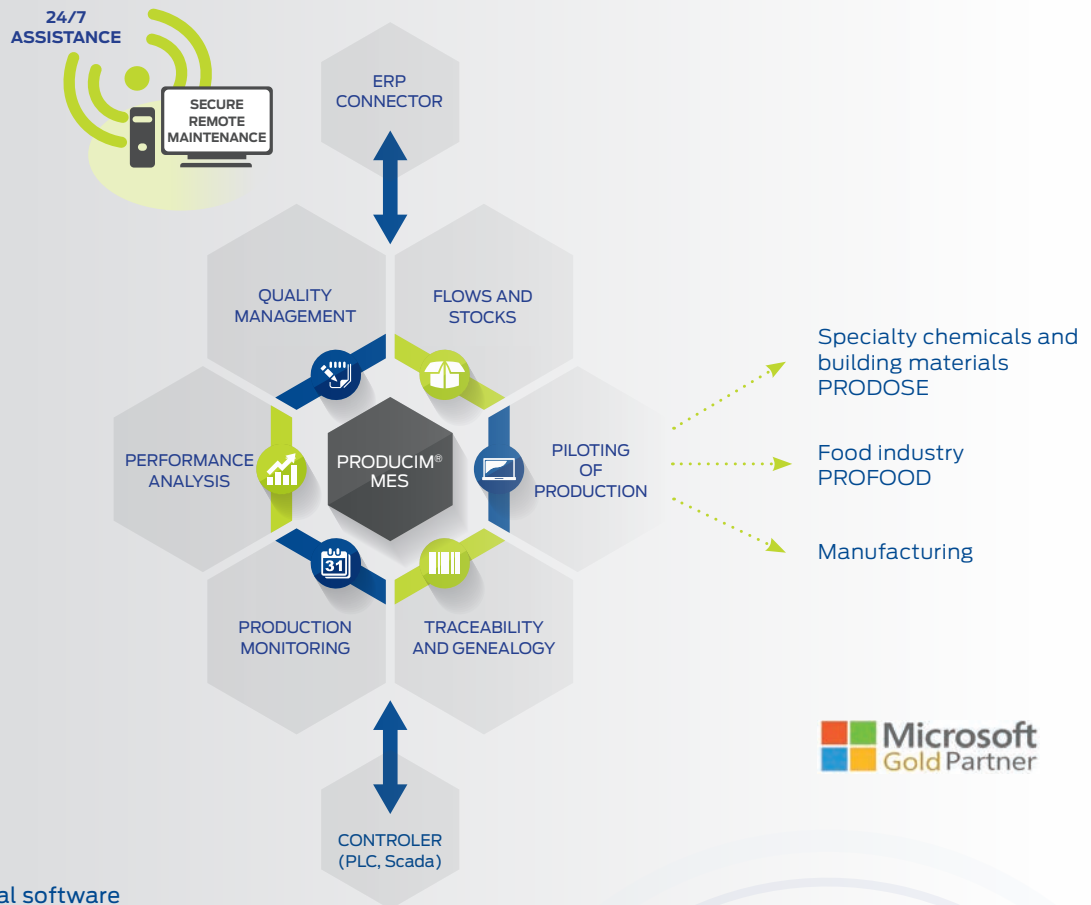
Tailor-made or
standard solutions

Turnkey solutions

New installations or
revamping of existing
installations

Piloting and traceability of industrial processes

Integration of the MES solution edited by  **COURBON** :
Producim[®], a software suite dedicated to piloting and optimization of industrial performance



 **Microsoft**
Gold Partner

- ✦ Multilingual software
- ✦ Vertical market software
- ✦ Industrial automation and IT solutions which fully meet your needs: planning, piloting, monitoring and traceability of the process
- ✦ Revamping of obsolete equipment and software to ensure production tools are secure and have a long service-life
- ✦ Adaptation of architecture to your new needs and requirements
- ✦ Modular software suite
- ✦ Modules which integrate the specific requirements of your specialty and markets

Our Assets

- ✦ **Methodology** adapted to "Core Model" projects
- ✦ **Support** with multi-site deployments
- ✦ **Historic integrator** of PRODOSE

Processes adapted to your needs

Our expertise of powdery and pasty processes in the chemical industry enables us to suggest innovative, unique and tailor-made solutions. The choice of solution, equipment and technologies is determined by your process requirements and the behaviour of raw materials, regardless of their properties (density, volatility, abrasiveness, granulometry...).

Our installations are designed to operate in demanding and extreme environments that prevail in the metal, non-metal and mineral industries as well as in the specialty chemistry industry.



Mixing unit
for metallic powders,
in an inert atmosphere,
and packaging in a flowbin.

**Very high contained
dosing and packaging unit**
Use of Glove-boxes with
controlled inert atmosphere.



Our Assets

- ✦ Expertise with powder processes, ATEX environments, handling of CMR products...
- ✦ Flow simulation with the ExtendSim solution
- ✦ Project management
- ✦ Optimized performance
- ✦ Reliable and long service-life installations
- ✦ Energy efficient installations
- ✦ Turnkey, tailor-made, compact, flexible and scalable solutions

Complete installations integrating big-bag unloading or filling stations as well as bag or container stations, equipped with dosing, screening, pneumatic transfer (pressurization / vacuum) or mechanical transfer solutions for bulk raw materials.



High containment big bag unloading stations and big bag filling station.

Wide range of **integrated functions**; respectively: massage, vibration, collapsing and: weighing, compacting, pre-inflation, automatic unhooking, etc.

These stations can be delivered with a variety of equipment that can be integrated to the process either before or after filling/unloading operations, such as pneumatic transfer in dense or diluted phase, mechanical transfer, etc.



Example of a mixing skid
with high dispersion
and shearing performances,
for liquid + solid materials,
with heat exchange option.





Services

Advice

- ✦ Master plan
- ✦ Evaluation / audit
- ✦ Preliminary studies, opportunity and feasibility studies (preliminary and detailed design)
- ✦ Specifications
- ✦ Evaluation of conformity
- ✦ Technical and functional analysis
- ✦ Assistance with optimization and use of the system

After-sales service

- ✦ **Regular preventative maintenance visits** of your formulation and mixing installations
- ✦ **Objective:** prolong the service life and productivity of your installations
- ✦ **Proactive approach:** we suggest the most recent technical innovations for your powdery, granulated or pasty processes

Spare parts

- ✦ Studies and diagnostics
- ✦ Delivery
- ✦ Stock

24/7 maintenance contracts

- ✦ Hotline
- ✦ TPAM (Third Party Application Maintenance)

Sustainable development

Our development policy complies with two complementary principles:

- Solutions with minimal impact on the environment (reduction of raw materials, decreased energy consumption),
- Development of high-efficiency public utility solutions to preserve resources.

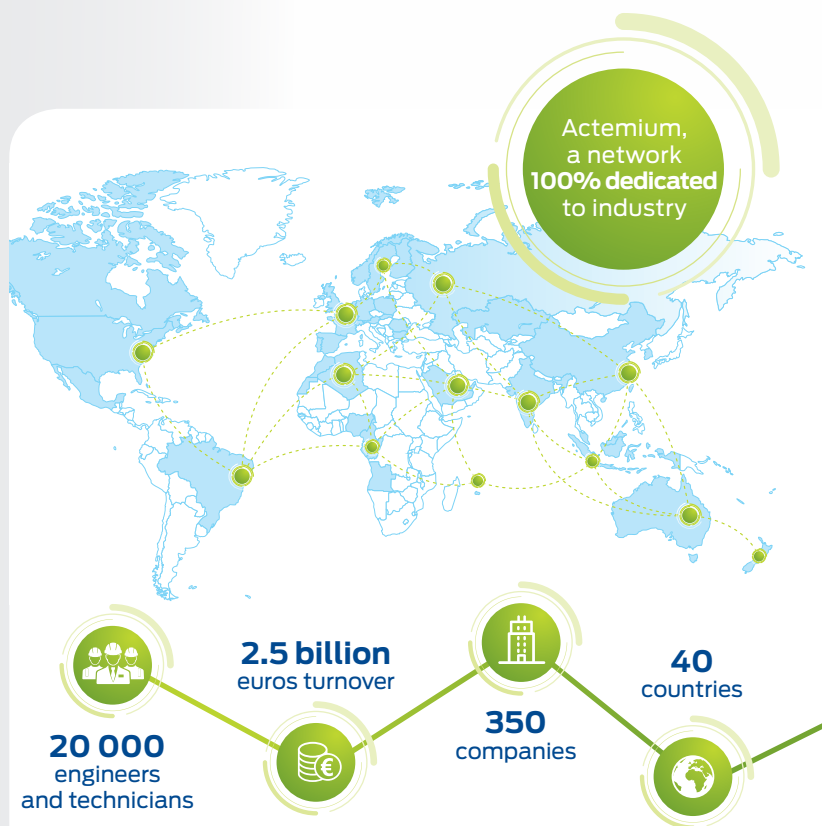
ASSISTANCE TECHNIQUE

- ✦ Assistance with design
- ✦ Assistance with commissioning
- ✦ Maintenance contracts
- ✦ I.T. support



Actemium Saint-Étienne Process Solutions develops **specific approaches** for each market:

- + Building materials
- + Speciality chemicals
- + Automotive
- + Life sciences
- + Food industry
- + Animal feed
- + Environment



ACTEMIUM

Process Solutions
Saint-Étienne

Firm name: SOFRADEN Industrie S.A.S.
70 rue de la Montat
42000 Saint-Étienne - France
T +33 (0)4 77 41 07 29 - F +33 (0)4 77 41 00 20
contact.aseps@actemium.com

www.mixing-process.actemium.com

